

PRO-TACK

Circuit

Multifunction digital dashboard

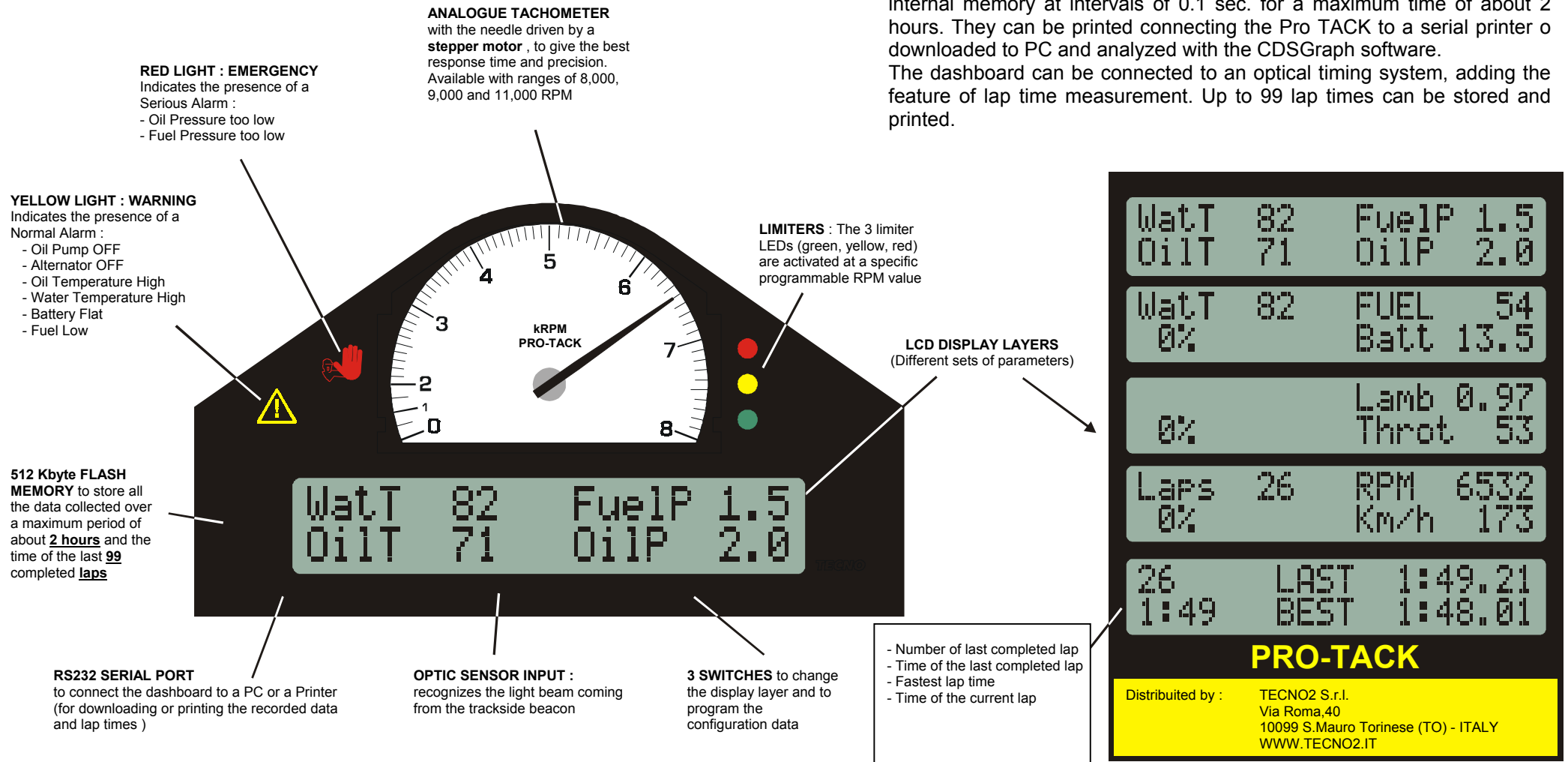
The Circuit version, PRO-TACK digital dashboard monitors in real time the engine conditions by means of sensors that acquires the typical parameters, warning the driver in the events of engine malfunction.

An analogue tachometer allows to quickly monitor the engine RPM and 3 LEDs are available to advise for a gear shift.

The backlighted LCD display indicates the oil pressure and temperature, the water temperature, the fuel pressure, the battery voltage, the throttle position, the lambda value, the fuel level in the tank, the engine RPM and the car speed.

All the available data (sensor state and alarms) can be stored in the internal memory at intervals of 0.1 sec. for a maximum time of about 2 hours. They can be printed connecting the Pro TACK to a serial printer or downloaded to PC and analyzed with the CDSGraph software.

The dashboard can be connected to an optical timing system, adding the feature of lap time measurement. Up to 99 lap times can be stored and printed.



PRO-TACK

Circuit

Items

Standard version (base version)

The PRO-TACK Circuit version is supplied with the following components:

- 1 Wiring harness** with the connections for the following signals:
RPM, Water Temperature, Oil Temperature
Oil Pressure, Fuel Pressure, Oil Pump Status
Alternator Status, Fuel Tank Level
Dash illumination, Lap Timing Sensor Input
Power supply - battery, PC or serial printer
- 5 Sensors :**
Water temperature
Oil temperature
Oil pressure
Fuel pressure
Speed Sensor
- 3 Switches**, for programming and user functions
- 1 PC/Printer Cable**, to connect the PRO-TACK to a PC or a Printer
- 1 Software CDSGraph** installation disk
- 1 Operating Manual**

Options available

- Lambda sensor and cable
- Throttle sensor cable
- Lap timing sensor (FRX01)
- Trackside Optical Beacon (infra-red) (FTX01)

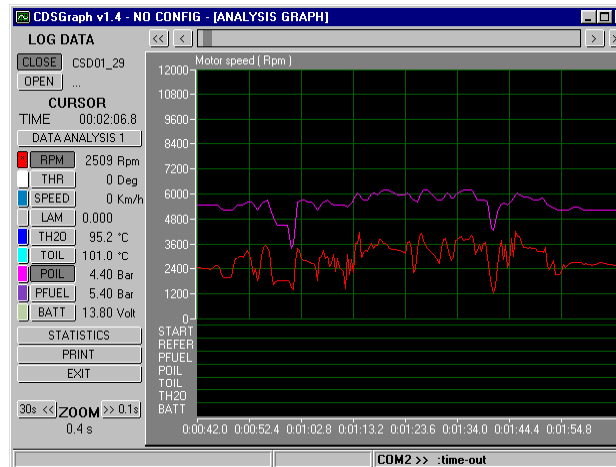
Data Analysis

The data recorded by the PRO-TACK during the race can be printed connecting the dashboard directly to a serial printer

Time	Throt	RPM	Spd	WatT	OilT	OilP
0:00:01	0	3160	150	67	105	5.4
0:00:02	0	3160	146	67	105	5.4
0:00:03	0	2320	146	67	105	5.4
0:00:04	0	3745	145	67	105	5.4
0:00:05	0	1899	145	67	105	5.3

or displayed on a PC using the CDSGraph software. You can print the time of the last 99 completed laps too.

Software



The CDSGraph program for Windows[®] has been developed in order to give to any, non PC expert, user the possibilities to verify the race parameters and to get the maximum performances from the car. It is possible to easily compare two different recording sessions, visualize the statistical values of the recorded parameters, including peak and mean values.

Beyond the normal dashboard programming, the software allows to draw the sensor's response curve, giving the maximum flexibility to the product.

Features

- Weight :** 600 g.
- Dimensions :** 183 x 112 x 52 mm
- Power Source :** 9 - 14 Vdc
- Digital Inputs :** 9
- Oil Pump
 - Alternator
 - RPM
 - Car Speed
 - 3 Switches
 - 1 Lap Timing Sensor
 - LCD Backlight
- Analog Inputs :** 8
- Battery Voltage
 - Oil Pressure
 - Fuel Pressure
 - Oil Temperature
 - Water Temperature
 - Lambda
 - Fuel Level
 - Throttle position
- Memory :** 512 Kbyte Flash Memory
- Chronometer :** Accuracy 0,01 sec.
- Connections :** RS232 Serial Port
- Visualizations :** 40 Characters LCD Display
1 Warning Light
1 Emergency Light
3 Sequential Shift Light
- Dialscales range:** 0-8,000, 0-9,000, 0-11,000
- Software :** Compatible with Microsoft Windows[®]

PRO-TACK